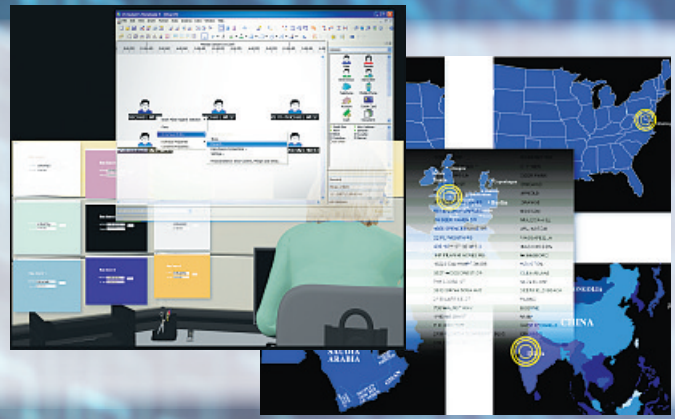


i2 Transforms The Way Analysts Source Global Data



Analysts have access to a wide range of information, on a local and global level thanks to the Internet. However, this vast amount of data can be both a blessing and curse during an investigation. The process of collecting and then sifting through this data can be very arduous, leaving analysts limited time to perform their most valuable function, analysis. As a result, timely-delivery of actionable intelligence to relevant teams can be delayed, impacting on the overall success of the investigation.

development of this solution was to maximise the amount of time analysts can spend analysing the data by dramatically simplifying the gathering mechanism.”

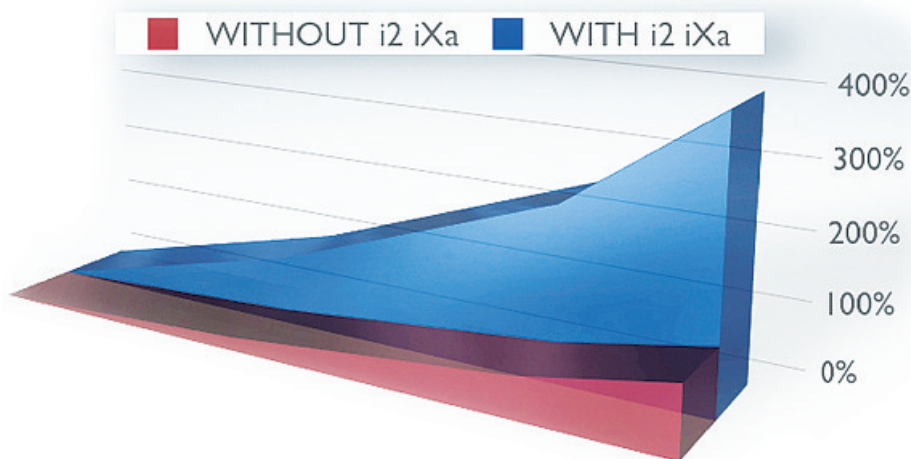
Critically, the **iXa Search Service** turns this ratio on its head, allowing analysts to spend 80 per cent of their time on their core function and only 20 per cent on the collection of data, dramatically increasing the value of their contribution. The net result is that analysts are able to deliver actionable intelligence to the relevant

with the initial name and then manually looking at variants such as Mike, Mick or Miguel. This process would then be repeated across the seven additional systems, taking up valuable time that could be better spent analysing the search results.

iXa Search Service revolutionises this process by enabling analysts to launch one simple search that will automatically search across multiple data sources. This gives analysts quick, easy and simple access to a vast range of data sources at one click of a mouse button. Analysts can therefore speed through the more administrative element of their work and focus on the process of developing valuable and actionable intelligence.

Not only does the search automatically expand across multiple data sources, but i2's unique Smart Search facility included within iXa Search Service improves the data collection and filtering process. Smart Search automates analyst-like searches by expanding search criteria to encompass synonyms, similar sounding words and words with typographical errors. This information is returned analysis-ready and ranked by iXa Search Service according to relevance, enabling users to very quickly identify the most important results.

Time poses a constant challenge for investigative teams as they work as quickly as possible towards a positive resolution. As the world's most advanced analytical multisource search service, iXa Search Service is a critical tool that will help dramatically speed up this process. For more information about how you can improve analytical effectiveness by up to 400 per cent, visit www.i2.co.uk or call **01223 728600**.



The balance of power is now set firmly in the hands of UK police analysts, following the launch of the new i2 **iXa Search Service**, a new data collection tool with the potential to increase analytical productivity by up to 400 per cent. This innovative new solution enables analysts to quickly and easily extract valuable data from the often overwhelming volume of information available.

Chris Knisley, Assistant Vice President at i2 said: “We identified that many analysts were spending a disproportionate amount of time gathering the data, up to 80 per cent of their time. This meant that they were only able to spend 20 per cent analysing the data and extracting the valuable intelligence. The key focus during

investigative teams more quickly, facilitating rapid progression of the investigation and helping to create a more positive outcome. With i2 AnalysisReady Search™ technology, the data is immediately available within i2 Analyst's Notebook 8, assisting the fast and smooth introduction of the data into an advanced analytical environment.

When obtaining information from external sources, analysts would typically be required to log-in to each individual system and run a series of queries in order to extract the relevant data. For example, an analyst may be looking for information on a British man named Michael White and need to interrogate eight different systems. The analyst would log-on to the first data source and then begin to query the data, starting